



# SOUND & CLEAR

SENATE DISTRICT 41 DEMOCRATS WWW.SD41.DFL.ORG

## UPCOMING EVENTS

### SD 41 Democrats Monthly Meeting

7 to 8:30 p.m.  
Mon., July 24  
Southdale Public Library, Ethel Berry Room, 7001 York Ave. S., Edina

### SD 41 Democrats Links (Meetups)

7 p.m.  
Tues., June 27 and Tues., July 25  
Davanni's, 5124 Gus Young Lane, Edina

### Edina Fourth of July Parade and Gathering

March with fellow Democrats, then quench your thirst at the Wooddale Park shelter  
Contact: Eileen McAwley, emcawley@yahoo.com

### Annual Picnic

Noon to 4 p.m.  
Sat., Aug. 5  
Picnic shelter next to Lake Cornelia, Rosland Park, 4300 W. 66th St., Edina  
Contact: Wendy Morris, wlmorris@aol.com

## CANDIDATES OFF AND RUNNING

Senate District 41 Democrats have endorsed candidates for the state legislature and given early financial support. Early funding is important to enable candidates to start campaigns. Individual contributions also are needed, so candidates can qualify for matching state funds, according to Senate District 41 leaders.

**Andrew Borene** is the endorsed candidate for State Senate. An Edina native, Borene graduated from Macalester College in St. Paul with an economics degree, then worked as a public finance investment banker. He also completed an executive education program on development finance at

Harvard University's Institute for International Development. Borene embraces fiscally responsible budgeting and spending. "I know the difference between a fee and a tax, and I don't want to pass the buck to future generations of Minnesotans," he says.

Borene is a former U.S. Marine Corps intelligence officer and served in Iraq with the 1st Marine Division as the coalition invasion began in 2003. During the 2004 presidential campaign, Borene was a spokesman for Veterans for Kerry-Edwards. He has been sought for his commentary on the Iraq War, terrorism and veterans issues by many national media outlets.

He is completing a law degree under the G.I. Bill at the University of Minnesota while working as a law clerk at the Minneapolis firm of Bassford Remele. He and his wife, Britta, have two young sons.

Borene says his campaign is a "community-based alternative to lobbyist influence and special interest politics. As I've met with community members, business owners and families in recent months, I've sensed a real need and desire for true leadership in the state legislature. I've heard time and again from people who want their state senator to represent mainstream Minnesota values. Those core values include good public schools

*continued on page 2*



ANDREW BORENE, DISTRICT 41 SENATE CANDIDATE



JEFFREY RICH, HOUSE DISTRICT 41A CANDIDATE



PAUL ROSENTHAL, HOUSE DISTRICT 41B CANDIDATE

DISTRICT  
LEADERS

Chair

**Bill Melton**

Associate Chair

**Eileen McAuley**

Secretary

**Ardis Wexler**

Treasurer

**Terri Stermer**

Affirmative Action

**Chuck Prentice**

Directors

**Donna Carlton****Jill Crafton****David Davison****Joan Kampmeyer****Bill Layton****Tim O'Brien****Gene Persha****Gwen Ruff****Del Smith****Peggy Smith****Russ Stanton**

Website

**[www.sd41.dfl.org](http://www.sd41.dfl.org)**

## SOUND &amp; CLEAR

Prepared and paid for  
by Senate District 41  
Democrats

## Comments?

## Suggestions?

Contact Gwen Ruff,  
e-mail [gweruff  
@yahoo.com](mailto:gweruff@yahoo.com)

Printed by

**Cooperative Printing  
Association**

## CANDIDATES CONTINUED

for our children, affordable health care for all Minnesotans, economic opportunity for our businesses and conservation of our state's amazing natural resources."

Borene's website is **[www.andrewborene.com](http://www.andrewborene.com)**.

His campaign office is located at 5100 Eden Ave., Suite 306. He wants his campaign "to serve as a backbone for progressive activity in our community," Borene says.

**Jeffrey Rich** has been endorsed to run for the House 41A seat. John Goetz, who was endorsed for this race at the March convention, has dropped out for personal reasons.

Rich received an economics degree from St. John's University in New York City and began his career working with an international investment bank on Wall Street. He's spent the last 17 years in advertising and marketing and is a vice president with Harte-Hanks, Inc., an international marketing and communications firm. Rich's website is **[www.voterich.com](http://www.voterich.com)**.

Rich and his wife, Amy, have lived in Edina for 15 years and have four children: two attending Edina public schools and two younger children who attend early childhood education programs.

Rich plans to focus his campaign on education, health care and initiatives to help small business. "Minnesota's public schools have always been among the best in the country and our commitment to education remains one of the most compelling reasons to raise a family in Edina," he says. "I'm deeply concerned about the direction our state has been heading these last few years, and I want to insure that education remains one of our state's highest priorities."

Rich says he believes Democrats have a tremendous opportunity to win in Edina. "There is a wave of discontent," he says. "A vote for me is not a vote just for Jeff Rich. It's a vote to put Democrats back in control of the House and our state."

**Paul Rosenthal** is the endorsed candidate in the House 41B race. His website is **[www.paulrosenthal.net](http://www.paulrosenthal.net)**.

Rosenthal has a degree in metropolitan studies and urban planning from New York University. He has owned a small business, was vice president of sales and leasing for Cimmaron properties, a commercial brokerage in New York City and was an intern working on environmental issues with the National Audubon Society. Rosenthal is a partner in ADRZ, a devel-

opment group formed to save endangered historic buildings, based in St. Paul.

"I too am very concerned about the direction of our country and state," Rosenthal says. "Minnesota was always considered a bastion of social progress and fiscal responsibility. I'm afraid neither of these are still true. Our House of Representatives seems more concerned with stadium projects and marriage amendments than with the real issues of our time such as education, health care and transportation."

These issues affect people on a daily basis, and the state in general. For example, "we spend way too much time in transit," Rosenthal says. "This lost time has great effects on our families. Business suffers as well. We must commit to long-term investment in transportation infrastructure. This investment will pay off by retaining existing employers, and attracting new employers."

Rosenthal and his wife, Elizabeth, have a kindergarten, who attends a public Edina elementary school, and a four-year-old.

"I want my children to know that one person, working together with like-minded people, can make a difference," he says.

**NOTES FROM DISTRICT LEADERS**

We were honored to be elected district chair and associate chair at the March convention.

Convention delegates also elected other new officers and directors. They are listed on page two. Our leadership team is energized and ready to work to get Democrats elected.

We think this is shaping up to be a year of extraordinary opportunity for Democrats.

Almost every day we run into someone who has “had enough” of dishonesty, ineptitude and the divisive social issues that extremist Republicans trumpet. Polls say the same thing: President Bush’s approval rating has plunged to record-low levels. It’s not just Democrats who are giving him a “thumbs down.” Plenty of Republicans and unaffiliated voters have lost confidence in this administration, the Republican-dominated Congress and much more.

The situation in Minnesota isn’t much different. Minnesotans are tired of state and

national political strategies that distract voters with divisive social issues while things that affect their real lives—jobs, transportation and health care—are ignored. Polls show that most people identify with core Democratic values of freedom of choice in their personal lives, separation of church and state, support for fair wages and taxes, concern for the environment and competent government.

As Democrats, our challenge is to focus on the issues people really care about and to make sure hope and optimism triumph over resentment and despair. This year we have great legislative candidates, and Senate District 41 Democrats are buzzing with energy and commitment. At the recent Senate District 41 Republican Convention, one delegate stated, “Let’s show the Democrats there’s no point in wasting their time this fall.” Let’s turn that around and show people in Edina and West Bloomington that times

have changed. To do that, you need to do two very important things. First, volunteer to help elect Democrats. The possibilities are almost endless because there are plenty of jobs—big and small—that need doing. Inserted in this newsletter is a postcard that lists volunteer opportunities for the candidates. Please indicate what you can do, put a stamp on the card and drop it in the mail. Someone from the candidate’s campaign will contact you. You also can call **Chuck Prentice** at **952-929-8284**.

Second, if you haven’t done so already, please make a financial contribution to Senate District 41 Democrats and to the campaigns. We pinch pennies, but almost everything we do costs money.

We’re anxious to make history in Edina. Thanks in advance for all your help.

*Bill Melton, Chair  
Eileen McAwley, Associate Chair*

**OFF THE BOOKSHELF**

***The Republican War on Science*  
By Chris Mooney**

A few months ago, newspapers reported on the ham-handed attempts of a Republican NASA appointee to prevent one of the agency’s most eminent scientists from discussing publicly the scientific evidence on global warming. In the ensuing uproar, the Bush administration was forced to back down from this outrageous attempt to censor science. A casual reader might have concluded this was an isolated episode. However, as Chris Mooney shows, nothing could be further from the truth. Republicans draw critical political support from business lobbyists seeking to enhance their short-run profitability at the expense of the nation’s fundamental economic and environmental interests as well as from religious extremists determined to impose their cultural agenda on America. The scope of their efforts to suppress scientific research is mind-boggling. Mooney’s exhaustively documented account can be a tough read at times, as one abuse follows another. This book is a call to action for all who cherish free intellectual inquiry and scientific progress.



**Y O U N G D E M S W A N T E D**

Are you a high school student with progressive values? Senate District 41 Democrats are looking for young people who would like to start their own organization. What a great way to get experience you can use in leadership positions throughout your life. With the upcoming elections, you’ll have plenty of chances to volunteer with campaigns. Interested? Contact Gwen Ruff at [gweruff@yahoo.com](mailto:gweruff@yahoo.com).

**INSIGHT ON ISSUES: REPUBLICAN PROPERTY TAX HIKES**

**Many Minnesotans are amazed their property taxes are rising rapidly, when services provided by local governments are little changed or are actually being cut.**

In 2002 Tim Pawlenty signed the pledge demanded by the Minnesota Taxpayers League that, if he were elected governor, no new taxes would be instituted during his term in office. However, more and more Minnesotans are coming to understand that reality is vastly different from Republican rhetoric.

A year ago Pawlenty managed to balance his budget with an increase in the tobacco excise tax. To comply with the pledge, this was labeled a “health-impact fee.” Even the right-wing Taxpayers League gagged on that deception, and in subsequent litigation the Minnesota Supreme Court overturned the law.

Surging property taxes have been a far greater concern to most Minnesotans. Upon taking office in January 2003, one of Pawlenty’s first targets was Local Government

Aid, a program created years ago with bipartisan support to assist local governments that have weak tax bases. Funding for the program was slashed. This forced affected municipalities to choose between slashing essential services—fire departments, police, libraries, etc.—and hiking property taxes.

The chart below illustrates the dramatic impact. For years the proportions of local government revenues—excluding education—derived from state aid and property taxes were fairly constant. However, as Local Government Aid was slashed, the proportion derived from state aid plunged, and the property tax proportion soared. The chart includes projections made by the Minnesota Department of Finance for future fiscal years, which start in July and run through June of the indicated year.

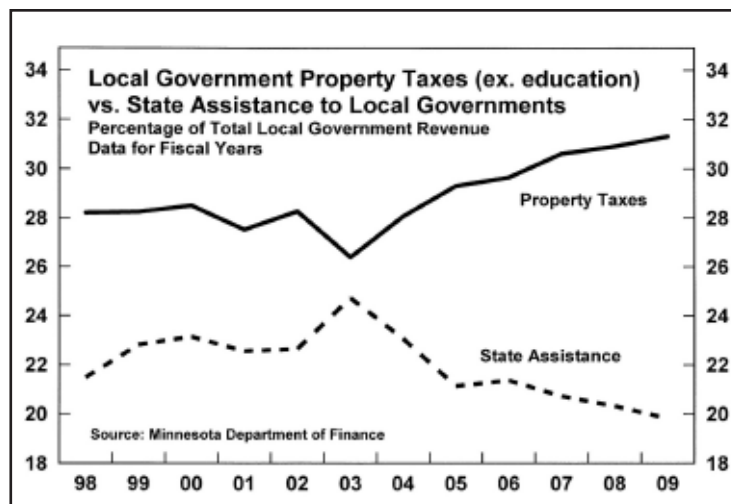
Unless something is done to restore Local Government Aid, there is no end in sight for the trend toward greater reliance on property taxes.

In this year’s legislative session, Republicans proposed a one-year “buy down” of property taxes, which only would have put a one-year dent in the trend.

Many Minnesotans are amazed their property taxes are rising rapidly, when services provided by local governments are little changed or are actually being cut. They’re right about the squeeze on services. Local government jobs in Minnesota, other than in education, declined by 2,500 from March 2003 to March of this year—a drop of 1.6 percent. Municipal revenues rose modestly during this period, barely keeping up with inflation.

The main driver behind the property tax hikes was, and continues to be, cutbacks in state assistance to municipalities. No doubt many people who supported Pawlenty in 2002 sincerely believed his “no new taxes” pledge. They had no idea that it soon would morph into soaring property taxes.

*Bill Melton*



C O N T R I B U T I O N S W I L L K E E P M O M E N T U M G O I N G

Our fund-raising drives this year have exceeded all previous records, as generous Democrats responded to our appeals. We even had several district Democrats offer to match contributions. This is great, and it shows Senate District 41 Democrats are committed to winning campaigns.

We're determined to marshal the resources needed to make 2006 a banner year for Democrats in this area. Once we reach our goals, we'll be free to work full time on Democratic campaigns.

We'll be using every communication channel we have to contact Democrats in the district who haven't already contributed to ask for their support. This newsletter is

one such channel. Some Democrats have gotten letters. Others will get e-mails, and many will get phone calls. Still others will be contacted in person by Democratic friends in their neighborhoods. Whatever the contact used, we're determined to make this the best fund-raising year ever for Senate District 41 Democrats.

Contributions are the only way we have to raise money. We truly depend on the generosity of Democrats like you.

Keep in mind that the first \$50 contribution you make (or \$100 for a couple) to the Senate District 41 Democrats entitles you to a dollar-for-dollar refund from the State of Minnesota through

the Political Campaign Refund Program. It's all so easy to do. Fill out the form below and mail it along with your check. In a few days our treasurer will send you a receipt and a one-page form to mail in for your refund. It only takes a couple minutes to fill out the form. Stick it in an envelope, address it, put on a stamp and send it off. Your refund check will come to you directly from the state, usually within six to eight weeks.

Contributions above \$50 per person or \$100 per couple aren't eligible for a refund, but they sure do help Democrats! So please be as generous as you can.

Every day we hear from more and more people who agree

with the Democratic values of equal opportunity, living wages, fair taxes, health and safety for all citizens, honest and competent government, quality education and family values that are more than just slogans. In 2004, 24,113 people in Senate District 41 voted for John Kerry. If each of these people took full advantage of the refund program and contributed \$50 this year, we would raise \$1.2 million. Wow, could we make a difference in Edina and West Bloomington with that kind of money.

There are only about five months to go before Election Day on Nov. 7. Please contribute today, and help us make every day count.

**Senate District 41 Democrats Contribution Form**

Electing Democrats is important. I'm enclosing my (our) check, payable to Senate District 41 Democrats.

\$150 \_\_\_\_\_ \$100 \_\_\_\_\_ \$50 \_\_\_\_\_ Other \_\_\_\_\_ Please mail my (our) receipt to the address below.

Name \_\_\_\_\_ E-mail address \_\_\_\_\_

Phone numbers (h) \_\_\_\_\_ (w) \_\_\_\_\_ (cell) \_\_\_\_\_

Name \_\_\_\_\_ E-mail address \_\_\_\_\_

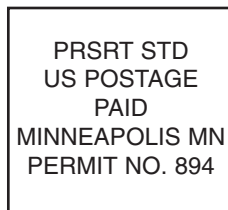
Phone numbers (h) \_\_\_\_\_ (w) \_\_\_\_\_ (cell) \_\_\_\_\_

Address \_\_\_\_\_ City \_\_\_\_\_ State \_\_\_\_\_ Zipcode \_\_\_\_\_

**Mail to: Terri Stermer, Senate District 41 Democrats Treasurer, P.O. Box 24073, Edina, MN 55424-0073**

Senate District 41 Democrats  
P. O. Box 24073  
Edina, MN 55424-0073

CHANGE SERVICE REQUESTED



PLEASE  
VOLUNTEER

**Our job is to elect Democrats, and we've got three great candidates for Senate District 41 House and Senate seats. If you'd like to help, there are plenty of jobs to do. Please call Chuck Prentice at 952-929-8284 to offer your services.**

## OUR COMMUNITY: HOUSING

Having a mix of people with a broad range of incomes and ages makes for a stronger community, but living in Edina is becoming unaffordable for many people.

Those are conclusions of the Edina Housing Task Force, which held a community forum on the issue this spring. Most of the school, city and hospital employees “who directly support the quality of life in our city” don’t live in Edina, according to a task force survey. Half of the people surveyed said they would if housing options were available. When workers have to commute to their jobs, it reduces their chances “to be part of the broader fabric of our community,” a draft task force report says.

The task force also found housing increasingly relates to economic competitiveness. A lack of moderately-priced housing makes it harder to attract many workers. Relying on neighboring communities to house Edina’s business employees “can threaten our ability to retain quality workers and remain economically competitive by increasing commute times and traffic congestion,” the draft report says.

The task force also links a diverse city population with strong schools. If young families can’t afford to live here, the school district eventually will suffer, according to the report.

Task force members will hold more community meetings before writing a final report this fall. A first draft of the group’s report is available online at [www.cityofedina.com/housing](http://www.cityofedina.com/housing).

